

# TEXTILES

## Seating / Chaises

Louis, Loft



| SPECIFICATION / SPÉCIFICATIONS   |                                    | LOUIS   | LOFT   |
|--|------------------------------------|---|--|
| Composition  | Content / Contenu<br>Backing / Dos | 100% Polyester<br>100% Acrylic Kiss Coat                                | 100% Polyester<br>100% Polyester                                   |
| Weight-linear yard / Poids-verge linéaire                                  |                                    | 18.47 oz  | 10.36 oz   |
| Width / Largeur  |                                    | 56"   | 55"  |
| Flammability / Inflammabilité  |                                    | California - Tech. bulletin 117-2013,<br>UFAC Class 1, NFPA 260 Class 1 | California - Tech. bulletin 117-2013,<br>NFPA 260 Class 1, MVSS302 |
| Seam slippage ASTM D4034 /<br>Résistance des coutures ASTM D4034           |                                    | Warp: 88 lbs<br>Fill: 34 lbs  | Warp: 28 lbs<br>Fill: 118 lbs                                      |
| Tear strength /<br>Résistance au déchirement                               |                                    | Warp: 54 lbs (ASTM D5034)<br>Fill: 33 lbs (ASTM D5034)                  | Warp: 21 lbs (ASTM D2261)<br>Fill: 16 lbs (ASTM D2261)             |
| Tensile strength ASTM D5034 /<br>Résistance à la rupture ASTM D5034        |                                    | Warp: 407 lbs<br>Fill: 180 lbs  | Warp: 137 lbs<br>Fill: 96 lbs                                      |
| Light fastness AATCC 16 /<br>Résistance à la lumière AATCC 16              |                                    | Grade 4.5   | Grade 3.5  |
| Color fastness to crocking AATCC 8 /<br>Résistance au dégorgeement AATCC 8 |                                    | Dry / Sec: Class 4<br>Wet / Humide: Class 5.5                           | Dry / Sec: Class 4<br>Wet / Humide: Class 4.5                      |
| Abrasion resistance ASTM D4157 /<br>Résistance à l'abrasion ASTM D4157     |                                    | 440,000 D.R. / D.F.   | 100,000 D.R. / D.F.  |
| Cleaning code /<br>Nettoyage   |                                    | WS: Water-Based Cleaner /<br>WS: Nettoyant à base d'eau                 | W: Water-Based Cleaner /<br>W: Nettoyant à base d'eau              |

#### SAMPLES / ÉCHANTILLONS

For samples or further information please call / Pour plus d'information et échantillons, svp contacter  
 Ennis Fabrics  
 USA (877) 953-6647  
 CANADA - English (800) 663-6647 CANADA - Français (888) 663-6647

**artopex**<sup>®</sup>

ARTOPEX  
 Head office/Siège social  
**artopex.com**

800 Vadnais, Granby QC  
 J2J 1A7 CANADA  
 T 1 800 378 0189

# LOUIS - Grade 1



Graphite  
LO96



Jet Black  
LO99



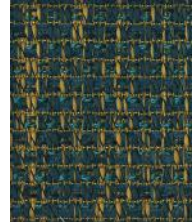
Wind  
TCMN



Dim Grey  
LO93



Dominos  
LO98



Sun Kissed  
TDGY



Blue Wash  
TDGW



Denim Blue  
TCMK



Turquoise  
TCNV



Teal Mix  
TCRJ



Crashing Blue  
TCXO



Gainsboro  
TCNF



Fire  
TDAQ



Gold Twist  
TDGX



Abricot  
TDGU

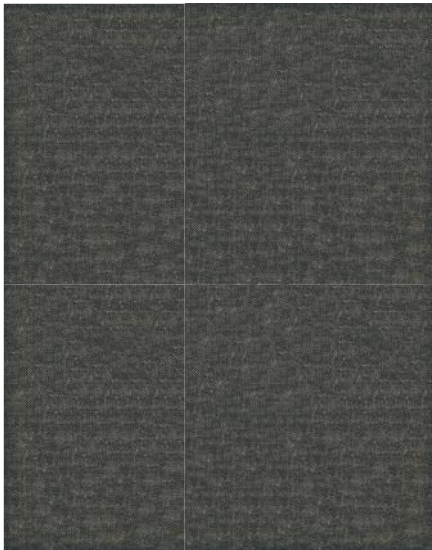


Old Lace  
TCNG

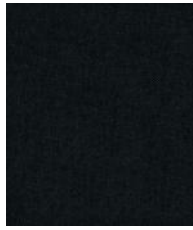


Snow  
TDGV

# LOFT - Grade 1



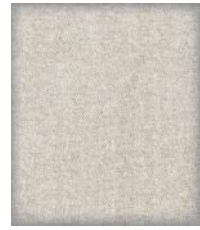
Cement  
LF99



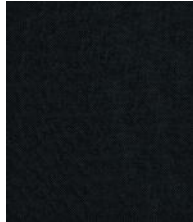
Black  
LF90



Diamond  
TCXM



Silversmith  
LF91



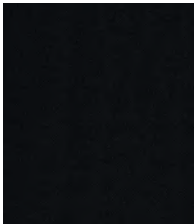
Charcoal  
TCWF



Metal  
TDiN



Sandy Brown  
TDiK



Cocoa  
TDiQ



Mid Brown  
TDiR



Fudge  
TDiO



Quarry  
TDiP



Cactus  
TDiJ



Slate Blue  
TCNE



Royal Blue  
TCMJ



Gunmetal  
LF88



Aqua  
TCUP



Ocean Teal  
TDii



Wine  
TDiL



Tangerine  
TDiH



Grass  
TDiM